

## To qualify for this study, children must:

- Have a diagnosis of sickle cell disease
- Be 8 to 18 years old at the time of the study
- Qualify for an MRI scan
- Be able to understand and follow directions from the researchers

## Contact us for more information:

**Study Coordinator:**  
Kristina Zvolanek, PhD Student

**Email:**  
[ANVIL@northwestern.edu](mailto:ANVIL@northwestern.edu)

**Phone:**  
(872) 267-3615

**Address:**  
645 N. Michigan Ave Suite 1100  
Chicago, IL 60611

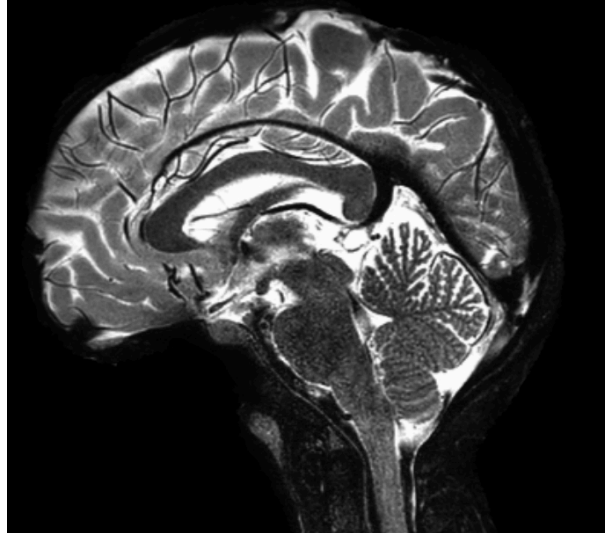
**Website:**  
<https://www.brightlab.northwestern.edu/>

Note: Contacting us does not obligate you to participate in this study.



This research is supported by the Northwestern University Department of Physical Therapy and Human Movement Sciences.  
IRB #STU00215426

# Sickle Cell MRI Research Study



*Northwestern University  
Applied Neuro-Vascular Imaging Lab  
Director: Prof. Molly Bright*



**Northwestern  
University**

**Now recruiting  
kids ages 8-18  
to participate  
with us!**

## **What is the purpose of the study?**

We want to understand how blood flow in the brain is changed in sickle cell disease. We can measure this using MRI scans.

In this study, we will measure blood flow in your child's blood vessels. We will also ask them to make small changes in their breathing (like holding their breath for a few seconds). These measurements may help us better understand sickle cell disease.

## **What will your child be asked to do in this study?**

Participants will be asked to lie down in the MRI scanner and stay as still as possible. They will also be asked to hold their breath for a few seconds and take a series of deep breaths. We will monitor their breathing with a small plastic tube attached to their nose.



*MRI Scanner*

**You and your child are  
welcome to discuss  
your concerns with us  
before deciding to  
participate.**

## **Frequently Asked Questions**

### **Where does this study take place?**

This study takes place at Northwestern University, 710 N. Fairbanks Court in Chicago, IL.

### **How long will this study take?**

This study involves one session that lasts up to 2 hours.

### **Are there any benefits to my child from participation?**

There are no direct health benefits to your child, but this study may help researchers develop new MRI methods to understand brain blood flow in sickle cell disease.

### **Are there any risks to your child from participation?**

This study is designed to pose minimal risk to participants. We will try to make sure your child is comfortable throughout the study.

### **Is there payment for participation?**

Families will be paid for their time and given a voucher for free parking.