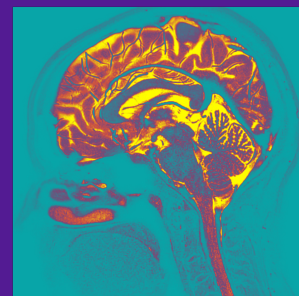
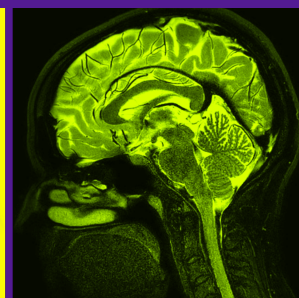
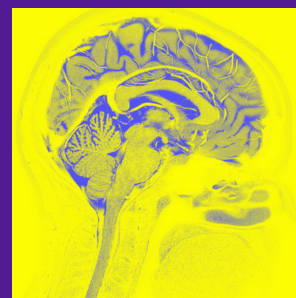


# You are invited to participate in a **Brain Imaging Research Study**



## testing a new breathing therapy to improve blood supply to the brain

The **Applied Neuro-Vascular Imaging Lab** (ANVIL) is recruiting for an **MRI** research study.

### Who?

Healthy, English-speaking men and women between the ages of 21-50 years old.

### What?

Regular short visits over three weeks to receive the breathing therapy, with an MRI scan at the beginning and end.

After 3 months, this will happen again using a different therapy dose.

### Where?

Center for Translational Imaging  
710 N. Fairbanks Ct.  
Chicago, IL 60611  
*and additional NU sites*

### Purpose

We are testing whether a new therapy, called Acute Intermittent Hypoxia, can increase blood flow to the brain. This therapy involves breathing air with lower oxygen levels than normal for short periods of time. We will measure brain blood flow with MRI visits.

### Interested? Contact ANVIL:

Prof. Molly Bright (Principal Investigator)

[AIHvasc@northwestern.edu](mailto:AIHvasc@northwestern.edu)

Study title: Improving human cerebrovascular function using acute intermittent hypoxia (STU00215559)

Participants will be compensated up to \$650 for participating in this trial.

Applied Neuro-Vascular Imaging Lab  
Northwestern University  
**Brain Imaging Research Study**  
Email: [AIHvasc@northwestern.edu](mailto:AIHvasc@northwestern.edu)

Applied Neuro-Vascular Imaging Lab  
Northwestern University  
**Brain Imaging Research Study**  
Email: [AIHvasc@northwestern.edu](mailto:AIHvasc@northwestern.edu)

Applied Neuro-Vascular Imaging Lab  
Northwestern University  
**Brain Imaging Research Study**  
Email: [AIHvasc@northwestern.edu](mailto:AIHvasc@northwestern.edu)

Applied Neuro-Vascular Imaging Lab  
Northwestern University  
**Brain Imaging Research Study**  
Email: [AIHvasc@northwestern.edu](mailto:AIHvasc@northwestern.edu)

Applied Neuro-Vascular Imaging Lab  
Northwestern University  
**Brain Imaging Research Study**  
Email: [AIHvasc@northwestern.edu](mailto:AIHvasc@northwestern.edu)

Applied Neuro-Vascular Imaging Lab  
Northwestern University  
**Brain Imaging Research Study**  
Email: [AIHvasc@northwestern.edu](mailto:AIHvasc@northwestern.edu)

Applied Neuro-Vascular Imaging Lab  
Northwestern University  
**Brain Imaging Research Study**  
Email: [AIHvasc@northwestern.edu](mailto:AIHvasc@northwestern.edu)

Applied Neuro-Vascular Imaging Lab  
Northwestern University  
**Brain Imaging Research Study**  
Email: [AIHvasc@northwestern.edu](mailto:AIHvasc@northwestern.edu)

Applied Neuro-Vascular Imaging Lab  
Northwestern University  
**Brain Imaging Research Study**  
Email: [AIHvasc@northwestern.edu](mailto:AIHvasc@northwestern.edu)